



smart asset security solutions





smart asset security solutions

A GPS tracking and security device for businesses

TRAAKiT is a GPS tracking and security service that keeps watch over whatever you want (well almost whatever you want!).

It has a wide range of applications, and can help protect:

- farm and estate assets, such as tractors, trailers, horse boxes, fuel bowsers...or any other piece of important farm equipment
- plant and equipment, such as diggers, dumpers, telehandlers, excavators, sweepers, generators and more
- rental vehicles, from cars to vans to articulated lorries
- retailers' goods, jewellery, computers, hi-fi equipment, cars and much more

Why use TRAAKiT?

- It is excellent value for money
- There are no hidden or extra charges
- It will help you save money in your business
- It provides an affordable way of increasing the security for your equipment or goods
- You are informed immediately if your equipment or goods is stolen, which makes recovery easier
- It's simple and easy to use
- TRAAKiT will work in any country where there is a GPRS mobile phone network
- You can guard whatever equipment or goods you want, anywhere you want
- You know where your equipment or goods is at all times
- You can track your equipment or goods online, anywhere in the world - no software to download!

TRAAKiT is easy to use and:

- allows you to monitor the location of whatever you want in real time
 - lets you set secure areas called "Invisible Fences"
 - gives you the option of setting your monitors up once and letting our servers take over automatically or managing it yourself on a day to day basis
 - provides you with critical alarms and alerts
 - gives you access to location and event history reports
 - provides engine hours used and mileage reports
- and in some applications
- You can set up an 'invisible fence' around your equipment or goods using a computer or mobile phone
 - You are immediately alerted if your equipment or goods is removed from the 'invisible fence'
 - Leave the management up to us and we will
 - automatically lock down your equipment by setting an 'invisible fence' to a schedule of your choice at set periods during the day or night, or
 - automatically set an 'invisible fence' every time the ignition is switched off
 - You can get reports on the hours run and miles travelled on each piece of equipment
 - You are alerted if your TRAAKiT is disconnected from your equipment's battery
 - You are alerted if the ignition is switched on during a lock down period



smart asset security solutions

How does TRAAKiT work?

TRAAKiT is a small GPS/GPRS device that is connected to our software system from which you can monitor and manage your equipment and goods. All you need is an internet connected PC — there's no software to download— anywhere in the world.



You hide the TRAAKiT device in your equipment or goods, and, if applicable, connect it to the equipment's power source. The TRAAKiT device then collects data from your equipment and goods including its position and sends this data back to our secure data centre via the mobile phone networks. The data is then available for you to see on your PC via a secure login.

You can manage your TRAAKiT completely using the PC and you can also command your TRAAKiT using your mobile phone.

How does TRAAKiT safeguard your equipment or goods?

On entering the website, you will see the latest position of all your TRAAKiTs together with a summary status of each including:

- the address of the last reported position and how long ago that was
- whether the TRAAKiT is in an armed or alerted state

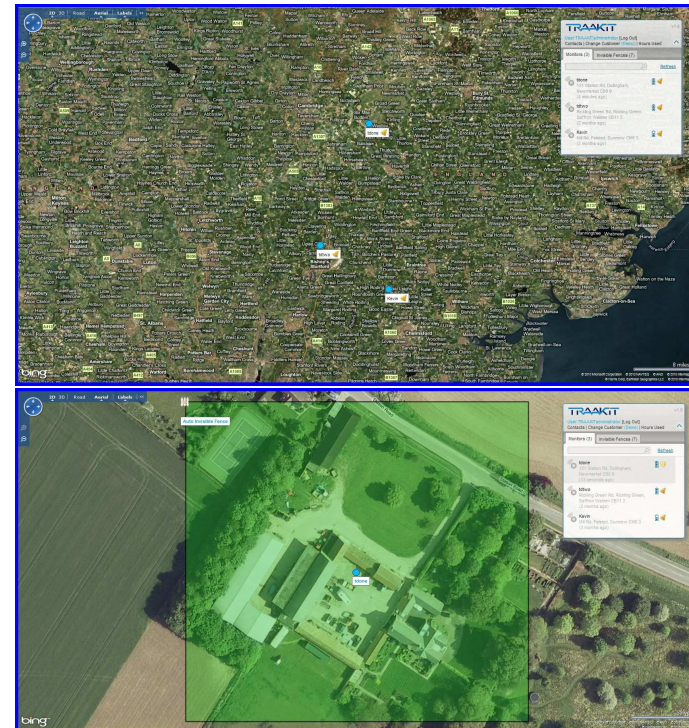
and, if applicable

- whether the engine is actually running
- whether the TRAAKiT is "Locked Down" where our system automatically arms and disarms Invisible Fences on your chosen schedule

You safeguard your equipment or goods by setting an Invisible Fence around it as a secure area that you do not want your equipment or goods to leave.

The Invisible Fence is an electronic boundary that you define either on your PC or by using your mobile phone. It is displayed on the screen in green and can be as large as you wish.

If your equipment or goods leaves the Invisible Fence, we alert you by text message and email and you can decide what action to take as the screen updates with the latest position.

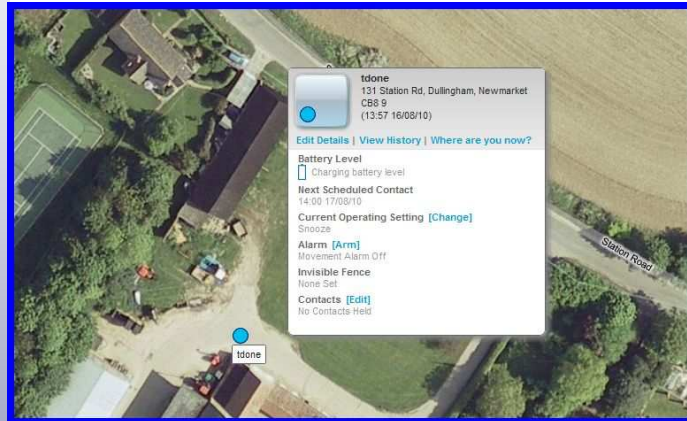




smart asset security solutions

Managing your TRAAKiT

You manage your TRAAKiT either via an internet connected PC or using your mobile phone, both of which are secure. You have your own user id and password to access the PC and we only accept commands from mobile phones that you have registered with us.



Using your PC, you can:

- see the address and time of the last reported position
- see the status of the battery
- see when your TRAAKiT is next due to contact our servers
- set the Operating Setting, which determines how often your TRAAKiT contacts our servers
- arm and disarm your TRAAKiT by setting or disabling an Invisible Fence
- allocate the people that you wish to receive alarms and alerts and who can manage your TRAAKiT with their mobile phone.
- get an up to date position by asking “Where are you now?”

TRAAKiT keeps you informed

Your TRAAKiT device is constantly monitoring the status of your equipment and goods and we alert you immediately by text message and/or email when things go wrong. We have a comprehensive suite of alarms and alerts to warn you that:

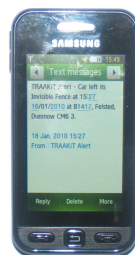
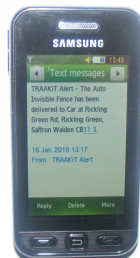
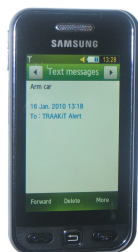
- your TRAAKiT has left its Invisible Fence
- the engine on your equipment has been switched on during a Lock Down period
- the battery on your TRAAKiT needs recharging
- the battery on your TRAAKiT is about to die
- your TRAAKiT has been disconnected from your equipment’s power source

and when you use your mobile phone to manage your TRAAKiT, you will receive messages:

- confirming whether or not the Invisible Fence has been delivered successfully
- providing with the latitude and longitude of your TRAAKiT with a link to see it on a map
- advising you that we could not contact your TRAAKiT at that time
- confirming whether or not you have rearmed your TRAAKiT successfully after recovering your equipment following an Invisible Fence breach
- telling you that the phone you are using is not registered so the command is not accepted

By sending us a simple text via your mobile, you can:

- arm and disarm your TRAAKiT by setting or disabling an Invisible Fence
- get an up to date position by asking “Where are you now?” and you will receive back a text message giving you the latitude and longitude together with a URL to a map showing the position.





smart asset security solutions

TRAAKiT helps you to reduce your business costs

The TRAAKiT system software stores data about how your TRAAKiT is used and you can access this data simply and easily. Based upon the data that you see, you make informed decisions about how your equipment is used that could reduce the cost of operation or simplify your billing process to your customers.

Hours Used Report

This report covers either a single TRAAKiT or all your TRAAKiTs. Choose the period that you want the report to cover and you are then given the Total Hours Run and the Distance covered by your equipment. You can see if your equipment is being used for longer than you expected. It also helps you schedule maintenance.

Device :							Chuck	
Total Duration:							03:32:00	
Total Distance:							328 Miles	
From Address	To Address	Start Date	Start Time	End Date	End Time	Duration	Distance	
M74 Lanark ML11 0	A72 Larkhall ML9 2	07/06/2010	14:15	07/06/2010	14:33	00:18:00	17 Miles	
A74(M) Moffat DG10 9	M74 Lanark ML11 0	07/06/2010	12:40	07/06/2010	14:11	01:31:00	32 Miles	
A75 Dumfries DG2 8	A74(M) Moffat DG10 9	07/06/2010	10:54	07/06/2010	12:35	01:41:00	36 Miles	
A75 Creetown Newton Stewart DG8 7	Garroch Roundabout Dumfries DG2 8	07/06/2010	10:54	07/06/2010	10:54	00:00:00	57 Miles	
DG9 8 (postcode), United Kingdom DG9 8	A75 Painure Newton Stewart DG8 7	07/06/2010	10:54	07/06/2010	10:54	00:00:00	36 Miles	
A77 Kirkoswald Maybole KA19 8	A77 Ballantrae Girvan KA26 0	07/06/2010	10:53	07/06/2010	10:54	00:01:00	34 Miles	
KA3 6 (postcode), United Kingdom KA3 6	A77 Maybole KA19 8	07/06/2010	10:53	07/06/2010	10:53	00:00:00	47 Miles	
A92 Ladybank Cupar KY15 7	45 Dalshannon Rd Cumbernauld Glasgow G67 4	07/06/2010	10:43	07/06/2010	10:43	00:00:00	68 Miles	
KY8 5 (postcode), United Kingdom KY8 5	KY8 5 (postcode), United Kingdom KY8 5	07/06/2010	10:43	07/06/2010	10:43	00:00:00	0 Miles	

History Report

This report covers a single TRAAKiT. Choose the period that you want the report to cover and you can see where your equipment has been either on a map or in a downloadable table.

The map shows all the locations that your TRAAKiT has reported during the period.

You can then see whether the track is what you expected and take appropriate action for the future, e.g. choosing a different route to reduce the mileage and therefore the fuel costs.

Time	Date	Fix Type	Fix Status	Address	Speed	Course	IGN	JID	ODO	Battery Level	Charge Level	LacID	CID
14:00	08/06/10	PersonalHeartbeat	OK	131 Station Rd, Dullingham, Newmarket CB8 9	1.4	⤴	False	0	0	3.7365	1.3725	822	25686
13:59	08/06/10	PersonalHeartbeat	OK	131 Station Rd, Dullingham, Newmarket CB8 9	0	⤴	False	0	0	3.7365	1.3725	822	35290
13:40	08/06/10	PersonalHeartbeat	OK	131 Station Rd, Dullingham, Newmarket CB8 9	0	⤴	False	0	0	3.7365	1.3725	822	35290
13:40	08/06/10	PersonalHeartbeat	OK	131 Station Rd, Dullingham, Newmarket CB8 9	0	⤴	False	0	0	3.7365	1.3725	822	35290



The table provides additional information and is used as the first line for troubleshooting:

Time and Date- the actual time and date that the monitor reported to our servers

Fix Type—whether this was a scheduled contact or one that had been delayed due to poor GPRS connectivity

Fix Status—whether the GPS signal was good or not

Address—the nearest address to the latitude and longitude reported

Speed—how fast your TRAAKiT was travelling

Course—the direction of travel

IGN—whether the engine was switched on or off (TD2 only)

JID - journey identifier (TD2 only)

ODO—miles travelled

Battery Level—the voltage of your TRAAKiT's battery

Charge Level—the charge left on the battery

LacID and CID—details about the mobile phone network



smart asset security solutions

Summary of features of the TRAAKiT TD1 portable monitor and the TRAAKiT TD2 wired-in monitor

	TD1 portable	TD2 wired-in
choice of operating settings	✓	✓
arm and disarm invisible fences via PC	✓	✓
arm and disarm invisible fences via mobile phone	✓	✓
ask "Where are you now?" via PC and current position on the map	✓	✓
ask "Where are you now?" via mobile and current position on on-line map	✓	✓
alerts and alarms sent via SMS to mobiles or to landline and via email	✓	✓
customer choice who receives alarms and alerts	✓	✓
personalise the monitor by giving it a name and a picture	✓	✓
report on where the monitor has been on a map, as a screen report or download as a csv file.	✓	✓
alert on breach of invisible fence	✓	✓
alert on low battery	✓	✓
alert on dead battery	✓	✓
alert on movement	✓	✓
operating battery life up to 2 months	✓	✓
operating battery life up to 5 months		✓
Lock Down.		✓
measure output of vehicle battery		✓
arm invisible fence on ignition off and disarm on ignition on		✓
alert on disconnect from vehicle's main power source		✓
report on engine hours used		✓